

Dairyman's Edge[®]

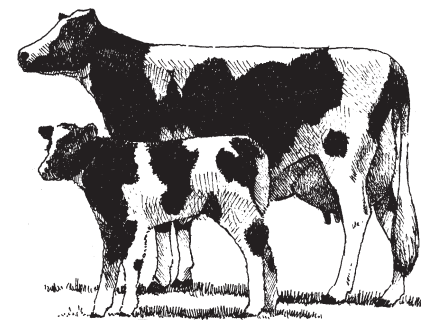
The world's leading ProNutrient

The specific combination of yeast, yeast culture, bacteria, and enzymes in *Dairyman's Edge* are backed by years of research and professional technical support.

Add *Dairyman's Edge* to your nutrition program and see for yourself.

If you have not used *Dairyman's Edge* and would like to know how it can improve your herd's performance, please call us at: **800-888-5688**.

For more information, contact:



Dairyman's Edge[®]

**is put
to the test
by 3,665
COWS**

Did Dairyman's Edge[®] pass the test?...

We asked 46 dairy farms in Pennsylvania to evaluate the performance of *Dairyman's Edge*.

These farms had a total of 3,665 cows with an average milk production of 20,055 lbs. They were fed *Dairyman's Edge* an average of 67 days during the evaluation.

The dairymen were asked to evaluate *Dairyman's Edge* on the following points:

1. *Increased dry matter intake*
2. *Reduction of grain in manure*
3. *Reduction of fiber in manure*
4. *Increased milk production*



What the test results said...

87% of the herds reported a positive response

82% of the herds rated Dairyman's Edge performance as very good to excellent.

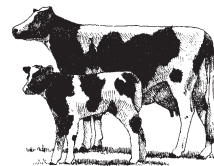
81% reported reduced grain and/or fiber in manure.

58% reported an increase in dry matter intake.

More than **50%** reported an increase in milk production.

Average milk increase

3.5 lbs.
per head/per day



Dairyman's Edge[®]
The world's leading ProNutrient

Dairyman's Edge[®] works for results.

Dairyman's Edge produces results because of its unique combination of yeast, yeast culture, bacteria, and enzymes. Each of these ingredients have specific functions that enable them to do the following:

Live Yeast

- Improves the rumen pH levels.
- Decreases lactate production.
- Increases cellulolytic bacteria.
- Increases the rate of fiber digestion.
- Decreases the lag time of fiber digestion.
- Increases microbial protein production.

Yeast Culture

- Increases acetic acid production.
- Increases iso acids.
- Increases total rumen bacteria.

Bacteria

- Colonizes in the small intestine (*helps reduce scours*).
- Competes with pathogenic bacteria (*naturally*).
- Reduces the negative effects of stress.

Enzymes

- The enzymes in Dairyman's Edge have been chosen to focus on improving fiber and starch digestion reducing the negative effects of stress reducing grain and fiber passage in the manure
- The "targeted" enzymes are CELLULASE, XYLANASE, BETA-GLUCANASE, AMYLASE and PECTINASE

Dairyman's Edge works best in combination with:

- Good nutrition*
- Good management practices*
- and Good genetics*

...that's your part!